



Smithsonian Libraries

National Museum of American History Library
12th Street & Constitution Avenue, NW
Room 5016, MRC 630
Washington, DC 20013-7012

<http://library.si.edu/libraries/national-museum-american-history-library>

Trade Literature at the Smithsonian Libraries:

General copyright notice:

The copyright law of the United States (Title 17, United States Code) governs the making of photocopies or other reproductions of copyrighted materials. Under certain conditions specified in the law, libraries and archives are authorized to furnish a photocopy or other reproduction. One of these specified conditions is that the photocopy reproduction is not to be “used for any purpose other than private study, scholarship or research.” If a user makes a request for, or later uses, a photocopy or reproduction for purposes in excess of “fair use,” that user may be liable for copyright infringement. This institution reserves the right to refuse a patron the right to make photocopies if, in its judgment, fulfillment of the order would involve violation of copyright law.

Citation and publication:

The National Museum of American History Library’s Trade Literature Collection is an exceptionally valuable resource for historical research on American business, technology, marketing, consumption, and design. The collection contains more than 500,000 catalogs, technical manuals, advertising brochures, price lists, company histories and related materials representing more than 30,000 companies, primarily covering the years 1880-1945.

When citing materials found in the Trade Literature Collection, please include:

[Specific company name, i.e. Eastman Kodak Company], Trade Literature Collection,
National Museum of American History Library, Smithsonian Libraries, Washington D.C.
[date consulted]

If you intend to use images or materials from the Trade Literature Collection for publication, permission from the Smithsonian Libraries is required. Please contact SILimages@si.edu. Note that if work is protected by copyright, permission from copyright holder may also be required.

GENERAL ELECTRIC

GENERAL ELECTRIC COMPANY, SCHENECTADY, N. Y., SALES OFFICES IN PRINCIPAL CITIES

August, 1928



*GEF-1310

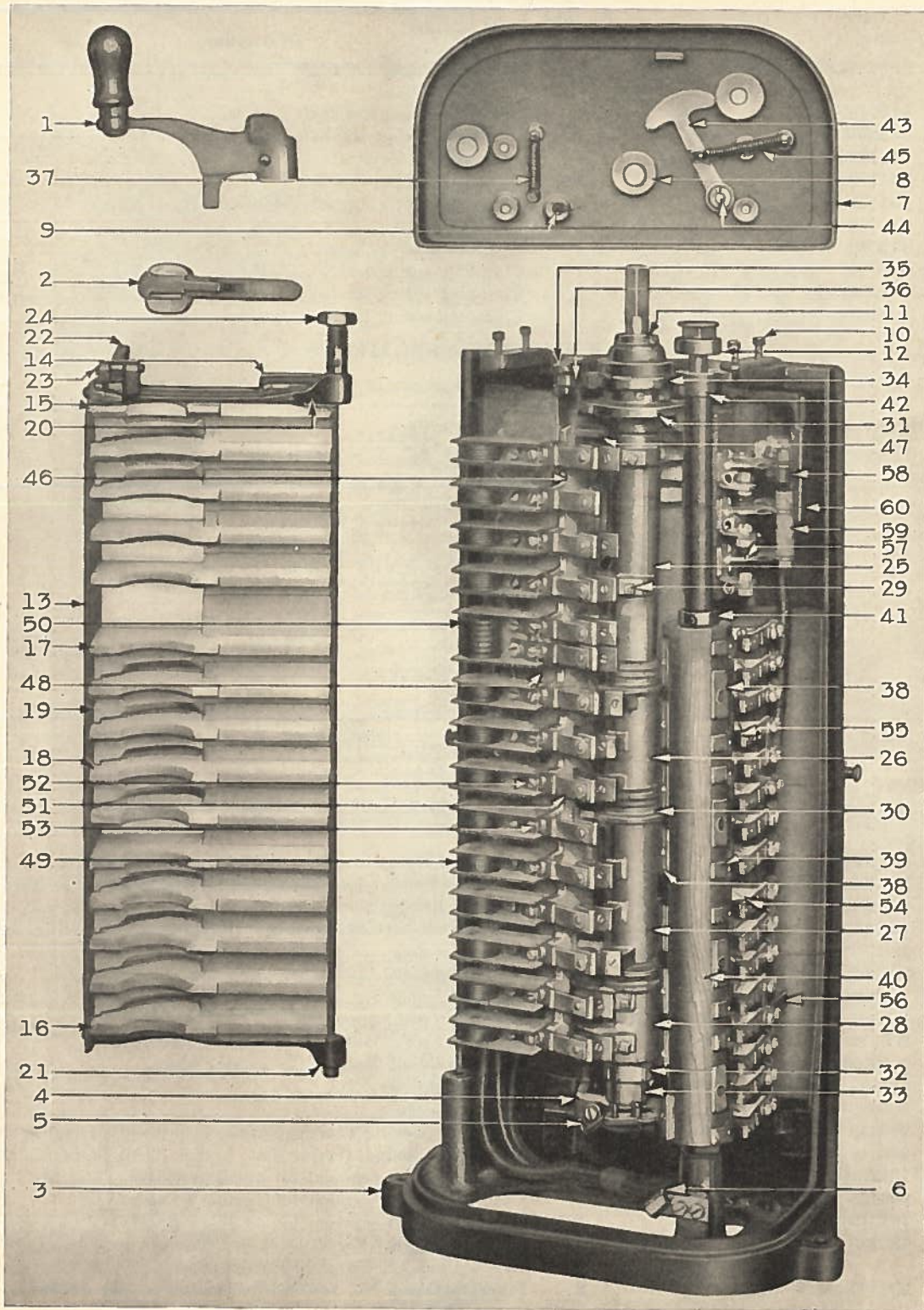
PARTS OF TYPE K-35 CONTROLLERS FORMS JJ, KK, MM, NN, PP, QQ, RR, SS AND TT

| Ref. No. | Cat. No. | Form | No. Required | Description |
|----------|-----------|----------------------------|--------------|--|
| 1 | 141687 | ALL | 1 | MAIN HANDLE, malleable iron, with locking wedge. |
| 2 | 189499 | " | 1 | REVERSE HANDLE. |
| 3 | 2617992G1 | JJ, NN, QQ, TT | 1 | FRAME with bearing cap, bushings and cap screws. |
| 3 | 2611028G3 | KK, PP, RR | 1 | FRAME with bearing cap, bushings and cap screws. |
| 3 | 16X664 | MM, SS | 1 | FRAME with bearing cap, bushings and cap screws. |
| 4 | 224184 | JJ, KK, NN, PP, QQ, RR, TT | 1 | Bearing cap for main cylinder shaft, with dowel, pivot and stop pins. |
| | 151848 | " | 2 | Cap screw fastening bearing cap to frame ($\frac{3}{8}$ in.-16, $1\frac{1}{2}$ in. hex. h. slot., sherardized). |
| | 1434927 | ALL | 1 | Bushing for main cylinder shaft bearing. |
| | 1434942 | KK, PP, RR | 1 | Bushing for reverse cylinder shaft bearing. |
| | 406014 | " | 1 | Set screw for bushing (14-24, $\frac{1}{2}$ in. headless, pointed, sp'l). |
| 5 | 1468360 | JJ, KK, NN, PP, QQ, RR, TT | 1 | Oil pipe for main cylinder shaft. |
| 6 | 1452089 | JJ, KK, MM, NN, PP, QQ, RR | 1 | Ground terminal for frame. |
| | 17376 | " | 2 | Cap screw fastening ground terminal to frame ($\frac{5}{16}$ in.-18, $\frac{3}{4}$ in. hex. h. slot., sherardized). |
| | 154196 | " | 2 | Spring lock washer for No. 17376 ($\frac{3}{16}$ in. by $\frac{3}{16}$ in. by $\frac{3}{16}$ in. thick). |
| 7 | 1153397G7 | JJ, MM, NN, QQ, RR, SS, TT | 1 | CAP PLATE with spring posts, pivot pin, oil cup and bushing for main cylinder shaft bearing. |
| 7 | 1153397G6 | KK, PP | 1 | CAP PLATE with spring posts, pivot pin, oil cup and bushing for main and reverse cylinder shaft bearing. |
| 8 | 112024 | ALL | 1 | Bushing for cap plate and main cylinder shaft bearing. |
| | 256786 | KK, PP | 1 | Bushing for cap plate and reverse cylinder shaft bearing. |
| | 30520 | ALL | 1 | Set screw for bushing ($\frac{5}{16}$ in.-18, $\frac{5}{16}$ in. headless, pointed, sherardized, sp'l). |
| 9 | 2X257 | " | 1 | Oil cup for main cylinder check pawl. |
| 10 | 133717 | " | 4 | Cap screw fastening cap plate to frame ($\frac{3}{8}$ in.-16, $\frac{3}{4}$ in. hex. h. sherardized). |
| 11 | 2X97 | " | 1 | Water cap and pointer for main cylinder shaft, with set screw. |
| 12 | 127065 | " | 1 | Water cap for reverse cylinder shaft, with set screw. |
| | 14410 | " | 2 | Set screw for water cap ($\frac{1}{8}$ in.-18, $\frac{5}{8}$ in. headless, sherardized, sp'l). |
| | 112026 | " | 1 | Wooden cover. |
| | 435529 | " | 1 | Catch for cover, right-hand. |
| | 432843 | " | 1 | Catch for cover, left-hand. |
| | 112029 | " | 2 | Stud for catch ($\frac{3}{8}$ in.-16, $1\frac{1}{2}$ in.). |
| | 2402352 | " | 2 | Thumb nut for stud ($\frac{3}{8}$ in.-16 tap). |
| | 143974 | " | 2 | Washer for stud ($\frac{1}{4}$ in. by $\frac{1}{2}$ in. by 0.0625 in. sherardized). |
| | 234391 | " | 1 | ARC DEFLECTOR with arc suppressor plates. |
| 13 | 1432656 | " | 1 | Wide side strip for arc deflector. |

NOTE.—Data subject to change without notice.
*Supersedes Bulletins Number 54074.1, IGE-54681.1 and GEF-74.

GEL-1310 Parts of Type K-35 Controllers

| Ref. No. | Cat. No. | Form | No. Required | Description |
|--|------------|----------------|--------------|---|
| 14 | 110081 | ALL | 1 | Narrow strip for back of arc deflector |
| 15 | 110082 | " | 1 | Upper end arcing plate for arc deflector |
| 16 | 110083 | " | 1 | Lower end arcing plate for arc deflector |
| 17 | 110084 | " | 1 | Wide arcing plate for arc deflector |
| 18 | 110085 | " | 12 | Narrow arcing plate for arc deflector, except end plates |
| 19 | 1432627 | " | 10 | ARC SUPPRESSOR PLATE |
| | 121834 | " | 50 | Screw fastening wide strip to arcing plate or arc suppressor plate (No. 10, 7/8 in. f.h. sherardized) |
| | 19892 | " | 30 | Screw fastening narrow strip to arcing plate (No. 10, 1 1/4 in. r.h.) |
| 20 | 224186 | " | 1 | Upper hinge bracket |
| 21 | 224187 | " | 1 | Lower hinge bracket with hinge pin |
| | 145670 | " | 4 | Screw fastening wide strip to hinge bracket (5/8 in.-18, 7/8 in. r.h.) |
| | 143510 | " | 4 | Screw fastening narrow strip to hinge bracket (5/8 in.-18, 5/8 in. r.h. sherardized) |
| 22 | 112033 | " | 1 | Latch for arc deflector |
| 23 | 112034 | " | 1 | Hinge pin for latch (3/8 in. by 2 in.) |
| | 110774 | " | 2 | Spring cotter for hinge pin (3/8 in. by 5/8 in. sherardized) |
| | 112035 | " | 1 | Compression spring for latch |
| | 224188 | " | 1 | Insulation shield between upper hinge bracket and arcing plate |
| | 112036 | " | 1 | Insulation shield between lower hinge bracket and arcing plate |
| | 189130 | " | 4 | Screw fastening No. 224188 or 112036 to hinge bracket (10-30, 3/8 in. f.h. sherardized) |
| 24 | 442134 | " | 1 | Hinge bolt for arc deflector |
| | 1886842G4 | JJ, KK, NN, RR | 1 | MAIN CYLINDER with shaft, insulation disks, collar, star wheel and contact segments |
| | 805010G8 | MM | 1 | MAIN CYLINDER with shaft, insulation disks, collar, star wheel and contact segments |
| | 1886842G7 | PP | 1 | MAIN CYLINDER with shaft, insulation disks, collar, star wheel and contact segments |
| | 1886842G9 | QQ | 1 | MAIN CYLINDER with shaft, insulation disks, collar, star wheel and contact segments |
| | 41D43G1 | SS | 1 | MAIN CYLINDER with shaft, insulation disks, collar, star wheel and contact segments |
| | 1886842G10 | TT | 1 | MAIN CYLINDER with shaft, insulation disks, collar, star wheel and contact segments |
| | 171784 | ALL | 1 | Set of main cylinder copper contact segments with burning tips, screws and pins |
| For illustrations of contact segments, see pages 4 and 5. | | | | |
| | 1495264 | " | 1 | Contact segment |
| | 2440216 | " | 1 | Contact segment |
| | 1495259 | " | 1 | Contact segment |
| | 1495261 | " | 1 | Contact segment |
| | 1495262 | " | 1 | Contact segment |
| | 1495265 | " | 2 | Contact segment |
| | 2440990 | " | 2 | Contact segment, with up-set ear |
| | 2440219 | " | 2 | Contact segment |
| | 2440223 | " | 2 | Contact segment |
| | 2440217 | " | 3 | Contact segment |
| | 2440218 | " | 6 | Contact segment |
| | 1464827 | " | 16 | Burning tip |
| | 400037 | " | 42 | Segment screw |
| A number of Type K-35 controllers have been furnished with segments with dowel pins. For convenience in ordering this segment or dowel pin, they are listed below. | | | | |
| | 2440222 | ALL | 2 | Contact segment, drilled for dowel pin |
| | 405786 | " | 2 | Dowel pin |

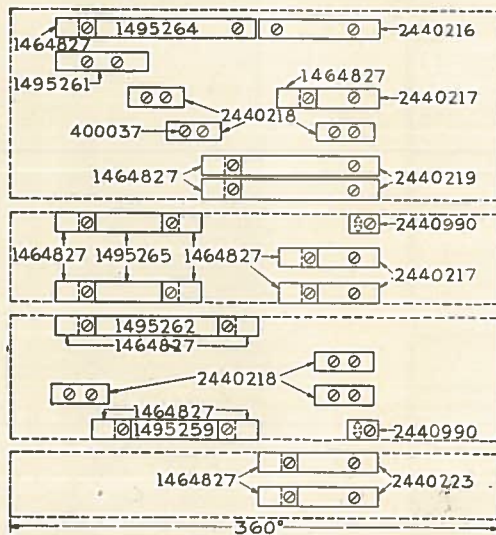


TYPE K-35 FORM JJ CONTROLLER

GEF-1310 Parts of Type K-35 Controllers

| Ref. No. | Cat. No. | Form | No. Required | Description |
|----------|------------|----------------------------|--------------|-------------------------------------|
| | 1886842P24 | JJ, KK, NN, PP, QQ, RR, TT | 1 | Insulated hexagonal shaft..... |
| | 112049 | MM | 1 | Insulated hexagonal shaft..... |
| | 16X665 | SS | 1 | Insulated hexagonal shaft..... |
| | 2431526 | ALL | 1 | Insulation for shaft..... |
| 25 | 151123 | " | 1 | Cylinder casting, upper..... |
| 26 | 151124 | " | 1 | Cylinder casting, upper middle..... |
| 27 | 112052 | " | 1 | Cylinder casting lower, middle..... |
| 28 | 112053 | " | 1 | Cylinder casting, lower..... |
| | 463701 | " | 1 | Clamping spring for No. 151123..... |
| | 1457627 | " | 1 | Clamping spring for No. 151124..... |
| | 1457614 | " | 1 | Clamping spring for No. 112052..... |

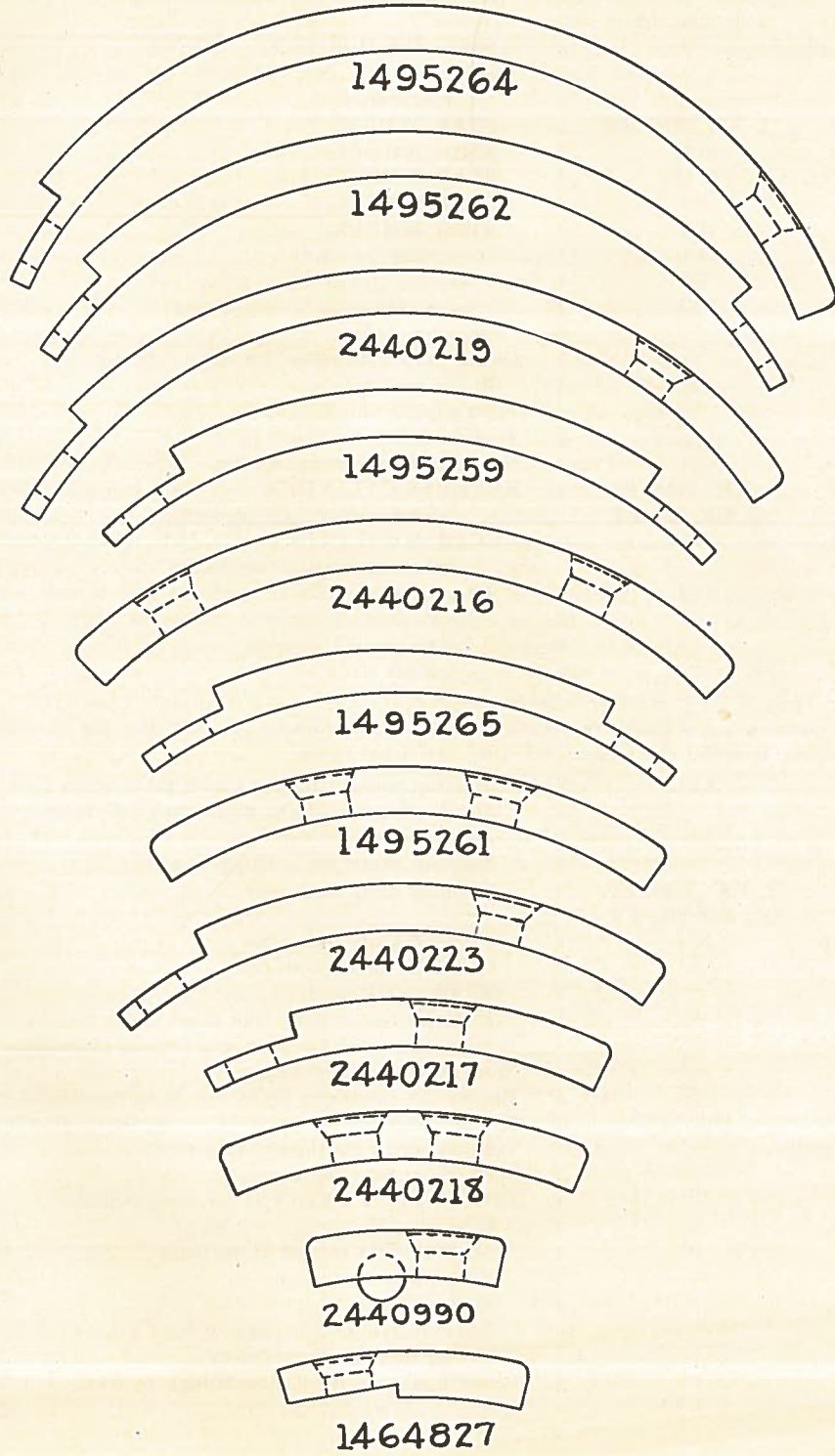
MAIN CYLINDER SEGMENTS



| | | | | |
|----|------------|------------------------|---|---|
| | 435385 | ALL | 1 | Clamping spring for No. 112053..... |
| 29 | 169302 | " | 8 | Set screw for clamping spring (3/8 in.-16, 7/8 in. sq.h. st'd).... |
| 30 | 422681 | " | 6 | Spacing disk between cylinder castings..... |
| | 16D347 | " | 8 | Felt washer between spacing disk and cylinder castings..... |
| 31 | 1886842P15 | JJ, KK, NN, RR | 1 | Insulation disk..... |
| 31 | 206302 | PP, QQ | 1 | Insulation disk..... |
| 31 | 1433995 | TT | 1 | Insulation disk..... |
| 31 | 112057 | MM, SS | 1 | Insulation disk, upper..... |
| | 206522 | MM | 1 | Insulation disk, lower, with wearing plate..... |
| | 16X666 | SS | 1 | Insulation disk, lower, with wearing plate..... |
| | 206523 | MM | 2 | Wearing plate..... |
| | 805010P21 | SS | 1 | Wearing plate..... |
| | 248346 | MM | 4 | Screw fastening wearing plate to disk (6-40, 5/8 in. f.h. sher.) |
| | 248346 | SS | 2 | Screw fastening wearing plate to disk (6-40, 5/8 in. f.h. sher.) |
| | 12D354 | JJ, KK, NN, RR | 1 | Copper contact segment for auxiliary finger..... |
| | 206305 | PP, QQ | 1 | Copper contact segment for auxiliary finger..... |
| | 1443191 | TT | 1 | Copper contact segment for auxiliary finger..... |
| | 180235 | JJ, KK, NN, PP, QQ, RR | 1 | Screw fastening No. 12D354 or 206305 to star wheel (10-30, 1/2 in. f.h. sherardized)..... |
| | 295392 | TT | 2 | Screw fastening No. 1443191 to insulation disk (8-36, 1/2 in. f.h. brass)..... |

MAIN CYLINDER SEGMENTS

(Actual Size)



GEF-1310 Parts of Type K-35 Controllers

| Ref. No. | Cat. No. | Form | No. Required | Description |
|---|------------|--------------------------------|--------------|--|
| 32 | 422515 | JJ, KK, NN, PP, QQ, RR, TT | 1 | Insulation collar ($\frac{3}{4}$ in. wide)..... |
| 33 | 1485684 | " | 1 | Steel collar (1 in. wide)..... |
| | 199097 | " | 1 | Set screw for No. 1485684 ($\frac{1}{16}$ in.-14, $1\frac{1}{2}$ in. headless, sherardized)..... |
| 34 | 821020P7 | JJ, KK, NN, RR | 1 | STAR WHEEL..... |
| 34 | 112059 | MM | 1 | STAR WHEEL..... |
| 34 | 206303 | PP, QQ | 1 | STAR WHEEL..... |
| 34 | 41C81P1 | SS | 1 | STAR WHEEL..... |
| 34 | 821020P8 | TT | 1 | STAR WHEEL..... |
| | 206524 | MM | 1 | Stop collar for shaft..... |
| | 41D43P18 | SS | 1 | Stop collar for shaft..... |
| | 444946 | ALL | 1 | Pin fastening star wheel to shaft..... |
| | 2X257 | " | 1 | Oiler for shaft..... |
| 35 | 112060 | " | 1 | Check pawl with roller, for main cylinder..... |
| 36 | 19739 | " | 1 | Roller with pin..... |
| | 112061 | " | 1 | Pivot pin for check pawl..... |
| 37 | 2412128 | " | 1 | Tension spring for check pawl..... |
| | 112062 | " | 1 | Spring post for tension spring..... |
| | 2190653G3 | JJ, KK, MM, PP, QQ, RR, SS, TT | 1 | REVERSE CYLINDER with shaft, insulation disks, collars, star wheel and contact segments..... |
| | 2190653G4 | NN | 1 | REVERSE CYLINDER with shaft, insulation disks, collars, star wheel and contact segments..... |
| | 16X667 | ALL | 1 | Set of reverse cylinder segments with screws..... |
| 38 | 12D487 | " | 12 | Small contact segment with up-set ears..... |
| 39 | 66903 | " | 4 | Large contact segment..... |
| | 1405021 | " | 24 | Segment screw..... |
| NOTE.—The Type K-35 Controller was formerly equipped with a medium, three-screw segment in the forward position and a small, two-screw segment in the reverse position. For the convenience of customers desiring to order these segments, they are listed below. | | | | |
| | 1493589 | ALL | 8 | Medium contact segment with three screw holes..... |
| | 1493584 | " | 4 | Small contact segment with two screw holes..... |
| | 1494594 | NN | 1 | Auxiliary contact segment..... |
| | 1405021 | " | 2 | Segment screw for auxiliary segment..... |
| 40 | 256787 | JJ, KK, MM, PP, QQ, RR, SS, TT | 1 | Cylinder body with pins..... |
| | 2190653P19 | NN | 1 | Cylinder body with pins..... |
| 41 | 129913 | ALL | 1 | Collar for shaft, with pin..... |
| 42 | 112070 | " | 1 | STAR WHEEL..... |
| | 151104 | " | 1 | Fiber insulation sleeve for shaft (1 in. by $1\frac{1}{8}$ in. by 9 in.).... |
| 43 | 112063 | " | 1 | Interlocking pawl for main and reverse cylinders..... |
| 44 | 112064 | " | 1 | Pivot pin for interlocking pawl..... |
| | 161261 | " | 1 | Washer for pivot pin ($\frac{1}{8}$ in. by $\frac{1}{8}$ in. by 0.0625 in. sherardized) |
| | 110774 | " | 1 | Spring cotter for pivot pin ($\frac{3}{32}$ in. by $\frac{5}{8}$ in. sherardized)..... |
| 45 | 13632 | " | 1 | Tension spring for interlocking pawl..... |
| | 112062 | " | 1 | Spring post for tension spring..... |
| | 234396 | " | 1 | INSULATION TROUGH for main cylinder..... |
| 46 | 112074 | " | 1 | Side plate for trough, left-hand..... |
| | 112075 | " | 1 | Side plate for trough, right-hand..... |
| | 1432649 | " | 1 | Back plate for trough..... |
| 47 | 171768 | " | 4 | Arcing plate..... |
| | 194951 | " | 16 | Screw fastening side plate or back plate to arcing plate (10-30, $\frac{5}{8}$ in. f. h. sherardized)..... |
| | 127116 | " | 4 | Screw fastening insulation trough to frame (14-24, $\frac{5}{8}$ in. r. h.) |
| | 154194 | " | 4 | Spring lock washer for No. 127116 ($\frac{1}{16}$ in. by $\frac{3}{16}$ in. by $\frac{1}{4}$ in.) |

GENERAL ELECTRIC COMPANY

Parts of Type K-35 Controllers GEF-1310

| Ref. No. | Cat. No. | Form | No. Required | Description |
|----------|------------|------------------|--------------|---|
| | 256789 | JJ, KK, MM, NN, | 1 | MAIN FINGER BLOCK with finger bases and blowout coils without contact fingers..... |
| | 16X668 | RR, SS PP, QQ | 1 | MAIN FINGER BLOCK with finger bases and blowout coils, without contact fingers..... |
| | 16X669 | TT | 1 | MAIN FINGER BLOCK with finger bases and blowout coils, without contact fingers..... |
| 48 | 2190650P2 | JJ, KK, MM, NN, | 1 | Finger block..... |
| | | RR, SS | | |
| 48 | 2190650P13 | PP, QQ | 1 | Finger block..... |
| 48 | 2190650P14 | TT | 1 | Finger block..... |
| 49 | 2670480G1 | ALL | 13 | Blowout coil with pole pieces, terminal block and finger base for one finger..... |
| 50 | 2670481G1 | " | 1 | Blowout coil with pole pieces, terminal block and finger base for two fingers..... |
| | 153984 | " | 58 | Screw fastening finger base or terminal block to finger block No. 10 (1 1/4 in. f.h. sherardized)..... |
| | 1452072 | " | 1 | Copper connection strip for two coils..... |
| | 256790 | " | 2 | Cable connector with terminals for two coils..... |
| | 1452079 | " | 9 | Small offset terminal for blowout coil..... |
| | 1452089 | " | 1 | Large offset terminal for blowout coil..... |
| | 1452092 | " | 1 | Straight terminal for blowout coil..... |
| | 17376 | " | 15 | Cap screw fastening terminal or connection strip to terminal block (1 1/8 in.-18, 3/4 in. hex. h. slot. sherardized)..... |
| | 498560 | " | 15 | Washer for No. 17376 (3/4 in. by 5/8 in. by 0.0625 in. sherardized) |
| | 154196 | " | 15 | Spring lock washer for No. 17376 (3/4 in. by 3/4 in. by 5/8 in. thick) |
| 51 | 1405080 | " | 15 | MAIN CONTACT FINGER..... |
| 52 | 126905 | " | 15 | Adjusting screw for main contact finger (14-24, 5/8 in. hex. h. slot., sherardized cap screw)..... |
| 53 | 1407209 | " | 15 | Locking spring for No. 126905..... |
| | 713353 | " | 15 | MAIN CONTACT FINGER, self-aligning with removable tip (Interchangeable with No. 1405080)..... |
| | 13D424 | " | 15 | Contact tip for No. 713353..... |
| | 150479 | " | 15 | Nut for No. 13D424 (14-24, hex. st'd, sherardized)..... |
| | 154194 | " | 15 | Spring lock washer for No. 150479 (1 1/4 in. by 3/4 in. by 5/8 in. thick)..... |
| | 713333 | " | 15 | Contact finger for No. 713353..... |
| | 713336 | " | 15 | Shunt for contact finger..... |
| | 12D900 | " | 15 | Adjusting screw for No. 713353..... |
| | 11D688 | " | 15 | Lock nut for No. 12D900..... |
| | 154196 | " | 15 | Spring lock washer for No. 11D688 (3/4 in. by 3/4 in. by 5/8 in. thick)..... |
| | 713332 | " | 15 | Seat for contact finger..... |
| | 729413 | " | 15 | Compression spring for contact finger..... |
| | 713327 | " | 15 | Support for contact finger..... |
| | 126872 | " | 15 | Cap screw fastening main contact finger to base (1 1/8 in.-18, 5/8 in. hex. h. slot., sherardized)..... |
| | 414842 | " | 15 | Washer for No. 126872 (3/4 in. by 5/8 in. by 0.060 in. brass)..... |
| | 206304 | PP, QQ | 1 | Auxiliary finger block with finger bases and fingers..... |
| | 206291 | " | 1 | Finger block..... |
| | 1400404 | " | 1 | Short finger base..... |
| | 206292 | " | 1 | Long finger base..... |
| | 153979 | " | 2 | Screw fastening No. 1400404 to block (No. 8, 3/4 in. f.h. sher.) |
| | 127347 | " | 2 | Screw fastening No. 206292 to block (No. 10, 3/4 in. f.h. sher.) |
| | 1404009 | " | 2 | Auxiliary contact finger..... |
| | 175561 | " | 4 | Screw fastening contact finger to base (10-30, 1/2 in. r.h. sher.) |

GEF-1310 Parts of Type K-35 Controllers

| Ref. No. | Cat. No. | Form | No. Required | Description |
|----------|-----------|----------------------------|--------------|--|
| | 206293 | PP, QQ | 2 | Double washer for No. 175561..... |
| | 417591 | " | 2 | Copper terminal for contact finger..... |
| | 148915 | " | 5 | Screw fastening finger block to frame ($\frac{5}{16}$ in.-18, 2 in. r.h. sherardized)..... |
| | 498560 | " | 5 | Washer for No. 148915 ($\frac{3}{4}$ in. by $\frac{5}{8}$ in. by 0.0625 in. sherardized) |
| | 1459208 | JJ, KK, MM, NN, PP, QQ, RR | 1 | Ground connection strip for main finger block..... |
| | 2432270 | ALL | 1 | Insulation between main finger block cables and frame..... |
| | 174827 | " | 5 | Screw fastening insulation to finger block (No. 8, $\frac{1}{2}$ in. f.h. sherardized)..... |
| | 1437839 | " | 1 | Cable cleat for main finger block cables..... |
| | 19628 | " | 2 | Screw fastening cable cleat to finger block (No. 10, $1\frac{1}{2}$ in. r. h. blued)..... |
| | 256791 | " | 1 | REVERSE FINGER BLOCK with finger bases, without contact fingers..... |
| | 2190651P2 | " | 1 | Finger block..... |
| 54 | 1404076 | " | 16 | Finger base..... |
| | 121834 | " | 32 | Screw fastening finger base to finger block (No. 10, $\frac{7}{8}$ in. f.h. sherardized)..... |
| 55 | 1407284 | " | 16 | REVERSE CONTACT FINGER..... |
| | 1443170 | " | 12 | Copper terminal for contact finger..... |
| | 1451202 | " | 1 | Copper terminal for contact finger, for cutout switch connection..... |
| | 1452075 | " | 2 | Connection strip for two contact fingers..... |
| | 112305 | " | 32 | Cap screw fastening contact finger and terminal or connection strip to finger base (14-24, $\frac{1}{2}$ in. hex. h. slot., sherardized) |
| | 143974 | " | 32 | Washer for No. 112305 ($\frac{1}{4}$ in. by $\frac{1}{2}$ in. by 0.0625 in. sherardized)..... |
| | 154194 | " | 32 | Spring lock washer for No. 112305 ($\frac{1}{4}$ in. by $\frac{3}{8}$ in. by $\frac{5}{16}$ in. thick)..... |
| | 129856 | " | 6 | Screw fastening reverse finger block to frame (14-24, 2 in. r.h. sherardized)..... |
| | 143974 | " | 6 | Washer for No. 129856 ($\frac{1}{4}$ in. by $\frac{1}{2}$ in. by 0.0625 in. sherardized)..... |
| | 154194 | " | 6 | Spring lock washer for No. 129856 ($\frac{1}{4}$ in. by $\frac{3}{8}$ in. by $\frac{5}{16}$ in. thick) |
| 56 | 1459207 | JJ, KK, MM, NN, PP, QQ, RR | 1 | Ground connection for reverse finger block..... |
| | 1438108 | ALL | 1 | Cable cleat for reverse finger block cables..... |
| | 19628 | " | 2 | Screw fastening cable cleat to finger block (No. 10, $1\frac{1}{2}$ in. r.h. blued)..... |
| | 256792 | JJ, KK, MM, NN, PP, QQ, RR | 1 | MOTOR CUTOUT SWITCH with insulated wires..... |
| | 16X670 | SS, TT | 1 | MOTOR CUTOUT SWITCH with insulated wires..... |
| | 112107 | ALL | 1 | Wooden base..... |
| 57 | 256793 | " | 3 | Switch contact with terminal support and terminal..... |
| | 112110 | JJ, KK, MM, NN, PP, QQ, RR | 1 | Switch contact with ground connection..... |
| | 114228 | SS, TT | 1 | Switch contact with terminal, for metallic return..... |
| | 114229 | " | 1 | Insulation between No. 114228 and frame..... |
| | 151720 | " | 2 | Screw fastening No. 114229 to base (No. 10, $\frac{5}{8}$ in. f.h. sherardized)..... |
| | 112111 | ALL | 1 | Double switch contact..... |
| | 1498354 | " | 1 | Switch blade with fulcrum and terminal, upper..... |
| | 1498353 | " | 2 | Switch blade with fulcrum and terminal, middle or lower..... |
| 58 | 33827 | " | 1 | Single switch handle with fiber collar..... |

Parts of Type K-35 Controllers GEF-1310

| Ref. No. | Cat. No. | Form | No. Required | Description |
|----------|----------|----------------------------|--------------|---|
| 59 | 112116 | ALL | 1 | Double switch handle..... |
| | 1452093 | " | 3 | Terminal for switch contact..... |
| | 126872 | " | 3 | Cap screw fastening terminal to support ($\frac{1}{8}$ in.-18, $\frac{5}{8}$ in. hex. h. slot. sherardized)..... |
| | 498560 | " | 3 | Washer for No. 126872 ($\frac{3}{4}$ in. by $\frac{5}{8}$ in. by 0.0625 in. sherardized)..... |
| | 1480733 | " | 3 | Nut for No. 126872 ($\frac{1}{8}$ in.-18, hex. st'd, sherardized)..... |
| | 154196 | " | 3 | Spring lock washer for No. 1480733 ($\frac{3}{4}$ in. by $\frac{3}{4}$ in. by $\frac{5}{16}$ in. thick)..... |
| | 39546 | " | 19 | Screw fastening switch contact or fulcrum to base (No. 10, $\frac{3}{4}$ in. r.h. blued)..... |
| | 1454000 | " | 1 | Supporting bracket for switch base..... |
| | 127349 | " | 2 | Screw fastening supporting bracket to base (No. 10, 1 in. f.h. sherardized)..... |
| | 16D98 | " | 1 | Insulation plate for connection board cables..... |
| | 12D492 | " | 1 | Insulation plate between cutout switch and main cylinder... |
| | 126905 | " | 1 | Cap screw fastening supporting bracket to controller frame (14-24, $\frac{5}{8}$ in. hex. h. slot., sherardized)..... |
| | 17373 | JJ, KK, MM, NN, PP, QQ, RR | 2 | Cap screw fastening ground connection to controller frame (14-24, $\frac{1}{2}$ in. hex. h. slot., brass)..... |
| | 143974 | " | 2 | Washer for No. 17373 ($\frac{1}{4}$ in. by $\frac{1}{2}$ in. by 0.0625 in. sherardized) |
| | 154194 | " | 3 | Spring lock washer for No. 126905 or 17373 ($\frac{1}{4}$ in. by $\frac{3}{4}$ in. by $\frac{5}{16}$ in. thick)..... |
| | 1437840 | ALL | 1 | Cable cleat for motor cutout switch cables..... |
| | 151663 | " | 2 | Screw for No. 1437840 (14-24, $1\frac{3}{4}$ in. r.h. sherardized)..... |
| | 143974 | " | 2 | Washer for No. 151663 ($\frac{1}{4}$ in. by $\frac{1}{2}$ in. by 0.0625 in. sherardized) |
| | 154194 | " | 2 | Spring lock washer for No. 151663 ($\frac{1}{4}$ in. by $\frac{3}{4}$ in. by $\frac{5}{16}$ in. thick) |
| | 218405 | " | 1 | Series stop lever with fiber shoe..... |
| 60 | 218406 | " | 1 | Fiber shoe for series stop lever..... |
| | 175742 | " | 2 | Screw fastening shoe to lever (8-36, $\frac{1}{2}$ in. f.h. sherardized).... |
| | 112121 | " | 1 | Pivot pin for series stop lever (threaded $\frac{7}{16}$ in.-14)..... |
| | 30524 | " | 1 | Nut for No. 112121 ($\frac{1}{8}$ in.-14, $\frac{1}{4}$ in. thick, $\frac{3}{4}$ in. across flats, hex. cham. one side)..... |
| | 161261 | " | 1 | Washer for No. 112121 ($\frac{1}{4}$ in. by $\frac{1}{8}$ in. by 0.0625 in. sherardized) |
| | 110774 | " | 1 | Spring cotter for No. 112121 ($\frac{3}{8}$ in. by $\frac{5}{8}$ in. sherardized)..... |
| | 112122 | " | 1 | Tension spring for series stop lever..... |
| | 445398 | " | 1 | Spring post for tension spring..... |
| | 17789 | " | 2 | Dowel for controller frame, with nut..... |
| | 1480738 | " | 2 | Nut for No. 17789 ($\frac{1}{2}$ in.-13, hex. st'd, sherardized)..... |

RATCHET SWITCH

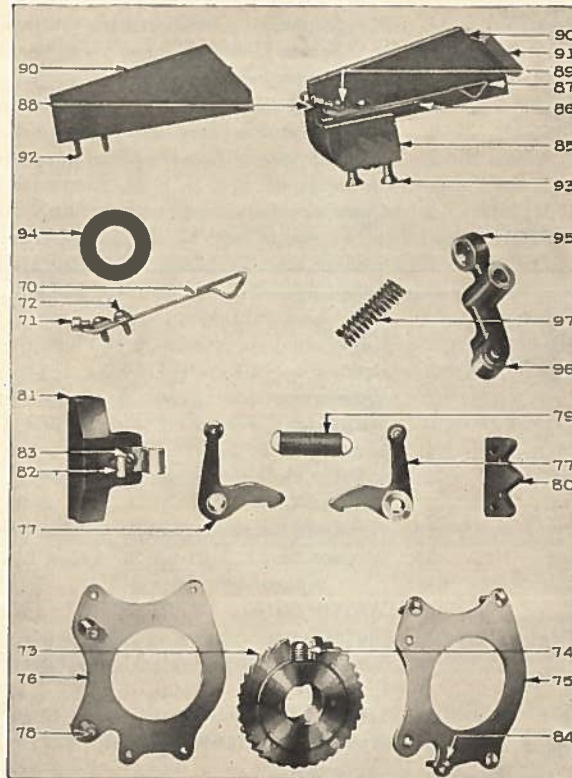
| | | | |
|--------|------------------------|---|--|
| 221257 | JJ, KK, NN, PP, QQ, RR | 1 | Set of parts necessary to equip controller for auxiliary line breaker operation..... |
| 223801 | TT | 1 | Set of parts necessary to equip controller for auxiliary line breaker operation..... |

Following are the parts:

| | | | |
|---------|----------------------------|---|--|
| 1400404 | JJ, KK, NN, PP, QQ, RR, TT | 1 | Finger base, inner..... |
| 1455735 | TT | 1 | Finger base, outer..... |
| 153979 | JJ, KK, NN, PP, QQ, RR | 2 | Screw fastening finger base to finger block (No. 8, $\frac{3}{4}$ in. f.h. sherardized)..... |
| 153979 | TT | 4 | Screw fastening finger base to finger block (No. 8, $\frac{3}{4}$ in. f.h. sherardized)..... |

GEF-1310 Parts of Type K-35 Controllers

| Ref. No. | Cat. No. | Form | No. Required | Description |
|----------|----------|------------------------|--------------|--|
| 70 | 1404009 | JJ, KK, NN, PP, QQ, RR | 1 | CONTACT FINGER..... |
| 70 | 1404009 | TT | 2 | CONTACT FINGER..... |
| 71 | 417591 | JJ, KK, NN, PP, QQ, RR | 1 | Copper terminal for contact finger..... |
| 71 | 417591 | TT | 2 | Copper terminal for contact finger..... |
| 72 | 166096 | JJ, KK, NN, PP, QQ, RR | 1 | Screw fastening contact finger to finger base (10-30, 3/8 in. r. h. sherardized) |
| 72 | 166096 | TT | 2 | Screw fastening finger to finger base (10-30, 3/8 in. r. h. sherardized)..... |



RATCHET SWITCH

| | | | |
|--------|----------------------------|---|---|
| 175561 | JJ, KK, NN, PP, QQ, RR | 1 | Screw fastening contact finger and copper terminal to finger base (10-30, 1/2 in. r.h. sherardized)..... |
| 175561 | TT | 2 | Screw fastening contact finger and copper terminal to finger base (10-30, 1/2 in. r.h. sherardized) |
| 150279 | JJ, KK, NN, PP, QQ, RR | 1 | Washer for No. 166096 (1 1/4 in. by 1 1/4 in. by 0.044 in. sherardized) |
| 150279 | TT | 2 | Washer for No. 166096 (1 1/4 in. by 1 1/4 in. by 0.044 in. sherardized) |
| 154191 | JJ, KK, NN, PP, QQ, RR | 2 | Spring lock washer for No. 166096 or 175561 (1 1/4 in. by 1 1/4 in. by 0.0625 in.)..... |
| 154191 | TT | 4 | Spring lock washer for No. 166096 or 175561 (1 1/4 in. by 1 1/4 in. by 0.0625 in.)..... |
| 216827 | JJ, KK, NN, PP, QQ, RR, TT | 1 | RATCHET MECHANISM, consists of top and bottom plates, ratchet wheel, set screw, ratchet pawls, tension spring, copper contact, contact support and star wheel segment.. |

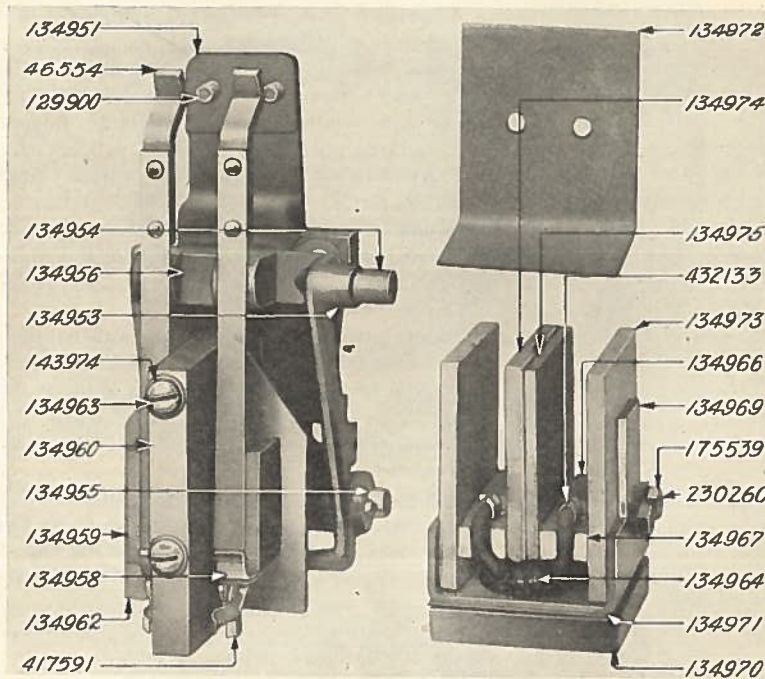
| Ref. No. | Cat. No. | Form | No. Required | Description |
|----------|----------|----------------------------|--------------|---|
| 73 | 206295 | JJ, KK, NN, PP, QQ, RR, TT | 1 | Ratchet wheel..... |
| 74 | 199097 | " | 1 | Set screw for ratchet wheel ($\frac{1}{16}$ in.-14, $1\frac{1}{2}$ in. headless, sp'l) |
| 75 | 13D101 | " | 1 | Top plate for ratchet wheel, with stop pin..... |
| 76 | 1404073 | " | 1 | Bottom plate for ratchet wheel..... |
| 77 | 1468342 | " | 2 | Pawl for ratchet wheel, with bushing and spring post..... |
| 78 | 1419753 | " | 2 | Pivot pin for pawl..... |
| 79 | 2410837 | " | 1 | Tension spring for pawl..... |
| 80 | 1469064 | " | 1 | Star wheel segment..... |
| 81 | 205083 | " | 1 | Contact support with copper contact..... |
| 82 | 1404078 | " | 1 | Copper contact..... |
| 83 | 166096 | " | 1 | Screw fastening contact to support (10-30, $\frac{3}{8}$ in. r.h. sher.) |
| | 154191 | " | 1 | Spring lock washer for No. 166096 ($\frac{1}{16}$ in. by $\frac{1}{16}$ in. by 0.0625 in.)..... |
| 84 | 199096 | " | 4 | Screw fastening star wheel segment, contact support, top and bottom plates together (10-30, $\frac{3}{4}$ in. f.h. sherardized) |
| | 224195 | " | 1 | Finger block with finger bases, contact fingers, copper terminals, arcing plates and brace..... |
| | 224196 | " | 1 | Finger block with finger bases, without fingers..... |
| 85 | 1432646 | " | 1 | Finger block..... |
| 86 | 1404083 | " | 2 | Finger base..... |
| | 205086 | " | 4 | Screw fastening finger base to finger block (8-36, $\frac{5}{8}$ in. f.h.) |
| 87 | 1404009 | " | 2 | CONTACT FINGER..... |
| 88 | 417591 | " | 2 | Copper terminal..... |
| 89 | 166096 | " | 4 | Screw fastening contact finger and copper terminal to finger base (10-30, $\frac{3}{8}$ in. r.h. sherardized)..... |
| | 150279 | " | 2 | Washer for No. 166096 ($\frac{1}{16}$ in. by $\frac{1}{16}$ in. by 0.044 in. sherardized) |
| | 154191 | " | 4 | Spring lock washer for No. 166096 ($\frac{1}{16}$ in. by $\frac{1}{16}$ in. by 0.0625 in.) |
| 90 | 1432648 | " | 2 | Arcing plate..... |
| 91 | 1432645 | " | 1 | Brace for arcing plates..... |
| 92 | 224197 | " | 4 | Screw fastening arcing plate to finger block (6-40, 1 in. r.h.) |
| | 205086 | " | 2 | Screw fastening brace to arcing plate (8-36, $\frac{5}{8}$ in. f.h. sherardized) |
| 93 | 151719 | " | 2 | Screw fastening finger block to bearing cap (14-24, $\frac{7}{8}$ in. f.h.) |
| 94 | 1487227 | " | 1 | Spacing washer between ratchet switch and bearing cap..... |
| 95 | 224198 | " | 1 | Check pawl with roller..... |
| 96 | 204123 | " | 1 | Roller with pin..... |
| | 1487231 | " | 1 | Pivot pin for check pawl..... |
| 97 | 224199 | " | 1 | Compression spring for check pawl..... |
| | 161261 | " | 1 | Washer for pivot pin ($\frac{1}{16}$ in. by $\frac{7}{8}$ in. by 0.0625 in. sherardized)... |
| | 110774 | " | 1 | Spring cotter for pivot pin ($\frac{3}{32}$ in. by $\frac{5}{8}$ in. sherardized)..... |

**CAM ATTACHMENT FOR AUXILIARY LINE BREAKER OPERATION
(FINGER TYPE)**

| | | | | |
|-----|--------|--------|---|---|
| | 134950 | MM, SS | 1 | CAM ATTACHMENT, complete..... |
| 100 | 134951 | " | 1 | Bearing cap and base casting for cam attachment..... |
| | 134952 | " | 2 | Screw fastening No. 134951 to controller frame ($\frac{3}{8}$ in.-16, 1 in. r.h. sherardized)..... |
| 101 | 134953 | " | 1 | Releasing lever with roller..... |
| 102 | 134954 | " | 1 | Roller with pin..... |
| 103 | 134955 | " | 1 | Hinge pin for releasing lever ($\frac{3}{8}$ in. by $3\frac{1}{2}$ in. naval brass)..... |
| | 110774 | " | 2 | Spring cotter for No. 134955 ($\frac{3}{32}$ in. by $\frac{5}{8}$ in. sherardized)..... |
| 104 | 134956 | " | 1 | Fiber block, for releasing lever..... |
| | 180235 | " | 2 | Screw fastening fiber block to releasing lever (10-30, $\frac{1}{2}$ in. f.h.) |
| 105 | 46554 | " | 2 | CONTACT FINGER with spring..... |

GEF-1310 Parts of Type K-85 Controllers

| Ref. No. | Cat. No. | Form | No. Required | Description |
|----------|----------|--------|--------------|--|
| 106 | 134958 | MM, SS | 2 | Finger stop..... |
| 107 | 417591 | " | 2 | Terminal for contact finger..... |
| 108 | 134959 | " | 1 | Finger block..... |
| | 175561 | " | 4 | Screw fastening No. 46554, 134958, 417591 to finger block (10-30, 1/2 in. r. h. sherardized)..... |
| 109 | 134960 | " | 1 | Fiber barrier between contact fingers..... |
| | 194940 | " | 1 | Screw fastening finger block to barrier (10-30, 1 in. f.h. sher.) |
| 110 | 134962 | " | 1 | Insulation plate between finger block and bearing cap..... |
| 111 | 134963 | " | 2 | Screw fastening barrier, finger block and insulation plate to bearing cap (14-24, 2 1/2 in. r.h. sherardized)..... |
| 112 | 143974 | " | 2 | Washer for No. 134963 (1 1/4 in. by 1/2 in. by 0.0625 in. sherardized) |



CAM ATTACHMENT

| | | | | |
|-----|--------|--------|---|--|
| 113 | 134964 | MM, SS | 1 | BLOWOUT COIL with leads and terminals..... |
| 114 | 432133 | " | 1 | Terminal for blowout coil lead..... |
| 115 | 134966 | " | 2 | Copper contact block..... |
| 116 | 134967 | " | 2 | Fiber base for No. 134966..... |
| | 216907 | " | 4 | Screw fastening No. 432133, 134966 to fiber base (8-36, 3/8 in. f. h.) |
| 117 | 134969 | " | 1 | POLE PIECE for blowout coil..... |
| 118 | 134973 | " | 2 | Arcing plate, outer, for pole piece..... |
| 119 | 134974 | " | 1 | Thick arcing plate, inner, for pole piece..... |
| 120 | 134975 | " | 1 | Thin arcing plate, inner, for pole piece..... |
| 121 | 230260 | " | 2 | Screw fastening arcing plates and bases for contact blocks in position (10-30, 2 5/8 in. r. h. brass)..... |
| 122 | 175539 | " | 2 | Nut for No. 230260 (10-30, hex. st'd, sherardized)..... |
| 123 | 134970 | " | 1 | Insulation base for pole piece..... |
| 124 | 134971 | " | 1 | Mica insulation plate between pole piece and base..... |
| | 148921 | " | 2 | Screw fastening pole piece to base (14-24, 1/2 in. f. h. sherardized) |
| 125 | 134972 | " | 1 | Insulation strip between No. 134970 and bearing cap..... |
| 126 | 129900 | " | 2 | Screw fastening No. 134970, 134972 to bearing cap (14-24, 3/4 in. f. h. sherardized)..... |

INDEX TO CATALOG NUMBERS

| CAT. NO. | PAGE | CAT. NO. | PAGE | CAT. NO. | PAGE | CAT. NO. | PAGE | CAT. NO. | PAGE |
|--------------------|------|--------------------|------|----------------------|------|-------------------|------|--------------|------|
| 13632-6 | | 133717-1 | | 204123-11 | | 713336-7 | | 1495259-2 | |
| 14410-1 | | 134950-11 | | 105083-11 | | 713353-7 | | 1495261-2 | |
| 17373-9 | | 134951-11 | | 105086-11 | | 729413-7 | | 1495262-2 | |
| 17376-1, 7 | | 134952-11 | | 106291-7 | | 805010G8-2 | | 1495264-2 | |
| 17789-9 | | 134953-11 | | 206292-7 | | 805010P21-4 | | 1495265-2 | |
| 19628-8 | | 134954-11 | | 206293-8 | | 821020P7-6 | | 1498353-8 | |
| 19739-6 | | 134955-11 | | 206295-11 | | 821020P8-6 | | 1498354-8 | |
| 19892-2 | | 134956-11 | | 206302-4 | | 1153397G6-1 | | 1886842G4-2 | |
| 30520-1 | | 134958-12 | | 206303-6 | | 1153397G7-1 | | 1886842G7-2 | |
| 30524-9 | | 134959-12 | | 206304-7 | | 1400404-7, 9 | | 1886842G9-2 | |
| 33827-8 | | 134960-12 | | 206305-4 | | 1404009-7, 10, 11 | | 1886842G10-2 | |
| 39546-9 | | 134962-12 | | 206522-4 | | 1404073-11 | | 1886842P15-4 | |
| 46554-11 | | 134963-12 | | 206523-4 | | 1404076-8 | | 1886842P24-4 | |
| 66903-6 | | 134964-12 | | 206524-6 | | 1404078-11 | | 2190650P2-7 | |
| 110081-2 | | 134966-12 | | 216827-10 | | 1404083-11 | | 2190650P13-7 | |
| 110082-2 | | 134967-12 | | 216907-12 | | 1405021-6 | | 2190650P14-7 | |
| 110083-2 | | 134969-12 | | 218405-9 | | 1405080-7 | | 2190651P2-8 | |
| 110084-2 | | 134970-12 | | 218406-9 | | 1407209-7 | | 2190653G3-6 | |
| 110085-2 | | 134971-12 | | 221257-9 | | 1407284-8 | | 2190653G4-6 | |
| 110774-2, 6, 9, 11 | | 134972-12 | | 223801-9 | | 1419753-11 | | 2190653P19-6 | |
| 112024-1 | | 134973-12 | | 224184-1 | | 1432627-2 | | 2402352-1 | |
| 112026-1 | | 134974-12 | | 224186-2 | | 1432645-11 | | 2410837-11 | |
| 112029-1 | | 134975-12 | | 224187-2 | | 1432646-11 | | 2412128-6 | |
| 112033-2 | | 141687-1 | | 224188-2 | | 1432648-11 | | 2431526-4 | |
| 112034-2 | | 143510-2 | | 224195-11 | | 1432649-6 | | 2432270-8 | |
| 112035-2 | | 143974-1, 8, 9, 12 | | 224196-11 | | 1432656-1 | | 2440216-2 | |
| 112036-2 | | 145670-2 | | 224197-11 | | 1433995-4 | | 2440217-2 | |
| 112049-4 | | 148915-8 | | 224198-11 | | 1434927-1 | | 2440218-2 | |
| 112052-4 | | 148921-12 | | 224199-11 | | 14'4942-1 | | 2440219-2 | |
| 112053-4 | | 150279-10, 11 | | 230260-12 | | 1437839-8 | | 2440223-2 | |
| 112057-4 | | 150479-7 | | 234391-1 | | 1437840-9 | | 2440990-2 | |
| 112059-6 | | 151104-6 | | 234396-6 | | 1438108-8 | | 2611028G3-1 | |
| 112060-6 | | 151123-4 | | 248346-4 | | 1443170-8 | | 2617992G1-1 | |
| 112061-6 | | 151124-4 | | 256786-1 | | 1443191-4 | | 2670480G1-7 | |
| 112062-6 | | 151663-9 | | 256787-6 | | 1451202-8 | | 2670481G1-7 | |
| 112063-6 | | 151719-11 | | 256789-7 | | 1452072-7 | | 41C81P1-6 | |
| 112064-6 | | 151720-8 | | 256790-7 | | 1452075-8 | | 11D688-7 | |
| 112070-6 | | 151848-1 | | 256791-8 | | 1452079-7 | | 12D354-4 | |
| 112074-6 | | 153979-7,9 | | 256792-8 | | 1452089-1, 7 | | 12D487-6 | |
| 112075-6 | | 153984-7 | | 256793-8 | | 1452092-7 | | 12D492-9 | |
| 112107-8 | | 154191-10, 11 | | 295392-4 | | 1452093-9 | | 12D900-7 | |
| 112110-8 | | 154194-6, 7, 8, 9 | | 400037-2 | | 1454000-9 | | 13D101-11 | |
| 112111-8 | | 154196-1, 7, 9 | | 406014-1 | | 1455735-9 | | 13D424-7 | |
| 112116-9 | | 161261-6, 9, 11 | | 414842-7 | | 1457614-4 | | 16D98-9 | |
| 112121-9 | | 166096-10, 11 | | 417591-8, 10, 11, 12 | | 1457627-4 | | 16D347-4 | |
| 112122-9 | | 169302-4 | | 422515-6 | | 1459207-8 | | 41D43G1-2 | |
| 112305-8 | | 171768-6 | | 422681-4 | | 1459208-8 | | 41D43P18-6 | |
| 114228-8 | | 171784-2 | | 432133-12 | | 1464827-2 | | 2X97-1 | |
| 114229-8 | | 174827-8 | | 432843-1 | | 1468342-11 | | 2X257-1, 6 | |
| 121834-2, 8 | | 175539-12 | | 435385-4 | | 1468360-1 | | 16X664-1 | |
| 126872-7, 9 | | 175561-7, 10, 12 | | 435529-1 | | 1469064-11 | | 16X665-4 | |
| 126905-7, 9 | | 175742-9 | | 442134-2 | | 1480733-9 | | 16X666-4 | |
| 127065-1 | | 180235-4, 11 | | 444946-6 | | 1480738-9 | | 16X667-6 | |
| 127116-6 | | 189130-2 | | 445398-9 | | 1485684-6 | | 16X668-7 | |
| 127347-7 | | 189497-1 | | 463701-4 | | 1487227-11 | | 16X669-7 | |
| 127349-9 | | 194940-12 | | 498560-7, 8, 9 | | 1487231-11 | | 16X670-8 | |
| 129856-8 | | 294951-6 | | 713327-7 | | 1493584-6 | | | |
| 129900-12 | | 299096-11 | | 713332-7 | | 1493589-6 | | | |
| 129913-6 | | 299097-6, 11 | | 713333-7 | | 1494594-6 | | | |

GENERAL ELECTRIC COMPANY

GENERAL OFFICE



SCHENECTADY, N. Y.

Sales Offices—Address nearest Office

| | | | |
|-------------------------|------------------------------|---------------------------|------------------------------|
| Akron, Ohio..... | 159 South Main Street | Memphis, Tenn..... | 130 Madison Avenue |
| Amarillo, Tex..... | 802 South Grant Street | Miami, Fla..... | 25 Southeast Second Avenue |
| Atlanta, Ga..... | 187 Spring Street, Northwest | Milwaukee, Wis..... | 425 East Water Street |
| Baltimore, Md..... | 39 West Lexington Street | Minneapolis, Minn..... | 107 South Fifth Street |
| Binghamton, N. Y..... | 19 Chenango Street | Nashville, Tenn..... | 234 Third Avenue, North |
| Birmingham, Ala..... | 602 North Eighteenth Street | Newark, N. J..... | 20 Washington Place |
| Bluefield, W. Va..... | 307 Federal Street | New Haven, Conn..... | 129 Church Street |
| Boston, Mass..... | 84 State Street | New Orleans, La..... | 837 Gravier Street |
| Buffalo, N. Y..... | 39 East Genesee Street | New York, N. Y..... | 120 Broadway |
| Butte, Mont..... | 20 West Granite Street | Niagara Falls, N. Y..... | 201 Falls Street |
| Canton, Ohio..... | 700 Tuscarawas Street, West | Oklahoma City, Okla..... | 15 North Robinson Street |
| Charleston, W. Va..... | 201 Capitol Street | Omaha, Neb..... | 409 South Seventeenth Street |
| Charlotte, N. C..... | 200 South Tryon Street | Philadelphia, Pa..... | 1321 Walnut Street |
| Chattanooga, Tenn..... | 536 Market Street | Phoenix, Ariz..... | 11 West Jefferson Street |
| Chicago, Ill..... | 230 South Clark Street | Pittsburgh, Pa..... | 535 Smithfield Street |
| Cincinnati, Ohio..... | 215 West Third Street | Portland, Oreg..... | 329 Alder Street |
| Cleveland, Ohio..... | 925 Euclid Avenue | Providence, R. I..... | 76 Westminster Street |
| Columbus, Ohio..... | 17 South High Street | Richmond, Va..... | 700 East Franklin Street |
| Dallas, Tex..... | 1801 North Lamar Street | Roanoke, Va..... | 202 South Jefferson Street |
| Davenport, Iowa..... | 111 East Third Street | Rochester, N. Y..... | 89 East Avenue |
| Dayton, Ohio..... | 25 North Main Street | St. Louis, Mo..... | 112 North Fourth Street |
| Denver, Colo..... | 650 Seventeenth Street | Salt Lake City, Utah..... | 200 South Main Street |
| Des Moines, Iowa..... | 418 West Sixth Avenue | San Antonio, Tex..... | 601 Navarro Street |
| Detroit, Mich..... | 700 Antoinette Street | San Francisco, Calif..... | 235 Montgomery Street |
| Duluth, Minn..... | 14 West Superior Street | Schenectady, N. Y..... | 1 River Road |
| El Paso, Tex..... | 109 North Oregon Street | Seattle, Wash..... | 811 First Avenue |
| Erie, Pa..... | 10 East Twelfth Street | Spokane, Wash..... | 421 Riverside Avenue |
| Fort Wayne, Ind..... | 1635 Broadway | Springfield, Mass..... | 1387 Main Street |
| Grand Rapids, Mich..... | 201 Monroe Avenue | Syracuse, N. Y..... | 113 South Salina Street |
| Hartford, Conn..... | 18 Asylum Street | Tacoma, Wash..... | 950 Pacific Avenue |
| Houston, Tex..... | 1016 Walker Avenue | Tampa, Fla..... | 112 Cass Street |
| Indianapolis, Ind..... | 106 North Illinois Street | Terre Haute, Ind..... | 701 Wabash Avenue |
| Jackson, Mich..... | 212 Michigan Avenue, West | Toledo, Ohio..... | 520 Madison Avenue |
| Jacksonville, Fla..... | 11 East Forsyth Street | Tulsa, Okla..... | 409 South Boston Street |
| Kansas City, Mo..... | 1004 Baltimore Avenue | Utica, N. Y..... | 258 Genesee Street |
| Knoxville, Tenn..... | 602 South Gay Street | Washington, D. C..... | 1405 G Street, Northwest |
| Little Rock, Ark..... | 223 West Second Street | Waterbury, Conn..... | 195 Grand Street |
| Los Angeles, Calif..... | 5201 Santa Fe Avenue | Worcester, Mass..... | 340 Main Street |
| Louisville, Ky..... | 455 South Fourth Street | Youngstown, Ohio..... | 16 Central Square |

Canada: Canadian General Electric Company, Ltd., Toronto

Hawaii: W. A. Ramsay, Ltd., Honolulu

Motor Dealers and Lamp Agencies in all large cities and towns

SERVICE SHOPS

| | | | |
|-----------------------|-----------------------------|---------------------------|------------------------------|
| Atlanta, Ga..... | 496 Glenn Street, Southwest | Los Angeles, Calif..... | 5203 Santa Fe Avenue |
| Buffalo, N. Y..... | 318 Urban Street | Minneapolis, Minn..... | 410 Third Avenue, North |
| Chicago, Ill..... | 509 East Illinois Street | New York, N. Y..... | 627 Greenwich Street |
| Cincinnati, Ohio..... | 215 West Third Street | Philadelphia, Pa..... | 1223 Washington Avenue |
| Cleveland, Ohio..... | 1133 East 152nd Street | St. Louis, Mo..... | 1009 Spruce Street |
| Dallas, Tex..... | 1801 North Lamar Street | Salt Lake City, Utah..... | 360 West Second South Street |
| Detroit, Mich..... | 700 Antoinette Street | Seattle, Wash..... | 1508 Fourth Avenue, South |
| Kansas City, Mo..... | 819 East Nineteenth Street | | |

Special service divisions are also maintained at the following works of the Company: Erie, Pa.; Ft. Wayne, Ind.; Oakland, Calif.; Pittsfield, Mass.; Schenectady, N. Y.; and West Lynn, Mass.—River Works and West Lynn Works

BROADCASTING STATIONS

WGY, Schenectady, N. Y. KOA, Denver, Colo. KGO, Oakland, Calif.

Distributors for the General Electric Company outside of the United States and Canada

INTERNATIONAL GENERAL ELECTRIC COMPANY, INC.

New York City, 120 Broadway

General Sales Offices, Schenectady, N. Y.

FOREIGN OFFICES, ASSOCIATED COMPANIES AND AGENTS

| |
|---|
| ARGENTINA: General Electric, S. A., Buenos Aires, Cordoba, Rosario de Santa Fé, and Tucuman |
| AUSTRALIA: Australian General Electric Company, Ltd., Sydney, Melbourne, Adelaide, Brisbane and Newcastle |
| BELGIUM AND COLONIES: Societe d'Electricite et de Mecanique (Procedes Thomson-Houston & Carels) Societe Anonyme, Brussels, Belgium |
| BRAZIL: General Electric, S. A., Rio de Janeiro, Sao Paulo, Bahia, and Porto Alegre |
| CENTRAL AMERICA: International General Electric Co., Inc., New Orleans, La. |
| CHILE: International Machinery Company, Santiago, Antofagasta and Valparaiso, Nitrate Agencies, Ltd., Iquique |
| CHINA: Andersen, Meyer & Company, Ltd., Shanghai; China General Edison Company, Sanghai |
| COLOMBIA: International General Electric, S. A., Bogota, Barranquilla, and Medellin |
| CUBA: General Electric Company of Cuba, Havana, and Santiago de Cuba |
| DUTCH EAST INDIES: International General Electric Company, Inc., Soerabaya, Java |
| ECUADOR: Guayaquil Agencies Co., Guayaquil |
| EGYPT: British Thomson-Houston Company, Ltd., Cairo |
| FRANCE AND COLONIES: Compagnie Francaise Thomson-Houston, Paris; International General Electric Co., Inc., Paris; Compagnie Des Lampes, Paris |
| GERMANY: H. B. Peirce, Representative, General Electric Co., Berlin |
| GREAT BRITAIN AND IRELAND: International General Electric Co., Inc., British Thomson-Houston Co., Ltd., London, W. C. 2; British Thomson-Houston Co., Ltd., Rugby |
| GREECE AND COLONIES: Compagnie Francaise Thomson-Houston, Paris, France |
| HOLLAND: Mijnsen & Co., Amsterdam |
| INDIA: International General Electric Company, Inc., Calcutta, Bombay and Bangalore |
| ITALY AND COLONIES: Compagnia Generale Di Elettricita, Milan |
| JAPAN: Shibaura Engineering Works, Tokyo; Tokyo Electric Company, Ltd., Kawasaki, Kanagawa-Ken; International General Electric Co., Inc., Tokyo and Osaka |
| JAVA: International General Electric Co., Inc., Soerabaya |
| MEXICO: General Electric, S. A., City of Mexico, Guadalajara, Monterrey, Tampico, Vera Cruz, and El Paso, Texas |
| NEW ZEALAND: National Electrical and Engineering Company, Ltd., Auckland, Dunedin, Christchurch, and Wellington |
| PARAGUAY: General Electric, S. A., Buenos Aires, Argentina |
| PERU: W. R. Grace & Company, Lima |
| PHILIPPINE ISLANDS: Pacific Commercial Company, Manila |
| PORTO RICO: International General Electric Company of Porto Rico, San Juan |
| PORTUGAL AND COLONIES: Sociedade Iberica de Construcoes Electricas Lda., Lisbon |
| SOUTH AFRICA: South African General Electric Company, Ltd., Johannesburg, Capetown, Durban, and Port Elizabeth |
| SPAIN AND COLONIES: Sociedad Iberica de Construcciones Electricas, Madrid, Barcelona, and Bilbao |
| SWITZERLAND: Trolliet Freres, Geneva |
| URUGUAY: General Electric, S. A., Montevideo |
| VENEZUELA: General Electric, S. A., Caracas and Maracaibo |

August, 1928 (3M)